

BATTERY CHARGING EQUIPMENT

THYRISTOR CONTROLLED

CVF

3CVF

NGTS

3NGTS

Robust, Reliable and Secure DC Power
for the Utility and industrial sector.



- Single or Three phase input.
- Three phase input, 6 or 12 pulse configuration.
- Output ranges from 6-220V DC.
- Natural convection cooling.
- Approved for utility and National Grid installations.
- Units can be installed in parallel to provide expandable-scalable power.
- High reliability design.
- Wide range of system sizes as standard.
- Can be used with a wide range of battery technologies.
- Can be configured for stand-by power, emergency lighting or as a power supply.
- Other variations include, chassis only, dual charger schemes, self contained units with an integrated battery compartment and units including power distribution panels.
- Cost effective capital and lifetime costs.
- 25 Year asset life.
- Dependable, critical power when you need it.
- Simple, easy maintenance.

Providing sustainable
critical power solutions
in an ever demanding world.



SYSTEMS
POWER PROTECTION SPECIALISTS

TECHNICAL SPECIFICATIONS

Thyristor Controlled

ELECTRICAL INPUT/OUTPUT

INPUT VOLTAGE	110-230VAC 1 Phase and 380-480VAC 3-Phase 50/60Hz +/-10% Variation
OUTPUT VOLTAGE RANGE	12V DC to 240V DC
SYSTEM OUTPUT RANGE	0.5kVA up to 120kVA
VOLTAGE REGULATION	+/- 1% steady state up to +/- 0.5%
EFFICIENCY	>80% depending on options fitted

CONTROL

ANALOGUE/DIGITAL	Standard Controller c/w Temperature Comp
INSTRUMENTATION	Moving Coil Din 72 or 96 or LCD or LED Metering

BATTERY COMPATIBILITY

TECHNOLOGY	Planté Lead Acid, Valve Regulated Lead Acid and Nickel cadmium Stationary battery types
------------	---

ENVIRONMENTAL

OPERATING TEMPERATURE	-20°C to +40°C
STORAGE TEMPERATURE	-40°C to +60°C
HUMIDITY	>95% non-condensing
DE-RATE	1% per °C above 40°C
ENCLOSURE	Sheet steel, epoxy powder coated > IP20

ALARM/FUNCTIONS

LOCAL	LED indication/Remote Volt-Free C/O Contacts
ALARM	Red LED
FUNCTIONS	Yellow LED, Green Mains On/Healthy

STANDARDS

LOW VOLTAGE DIRECTIVE	LVD 2014/35/EU
ELECTRICAL EMISSIONS	BS EN61000-6-4: 2007+A1: 2011
ELECTRICAL IMMUNITY	BS EN61000-6-2: 2005

OPTIONAL FEATURES

- Microprocessor Control c/w Back lit LCD display and RS485 access port. (Optional external comms port)
- Battery String Monitoring
- Battery String High impedance
- Negative Temperature Compensation
- Variable Output Voltage and Current Control
- Improved smoothing- Power Supply Configuration.
- Custom Livery
- CCITT smoothing for Telecom applications, to ETSI EN300 132-2
- BACnet/RS232 and Modbus communication protocol
- Full range of alarms (extra options):

AC Mains Fail

AC Mains Fail/Phase Fail

Charge Fail

Low Volts (multiple levels)

High Volts

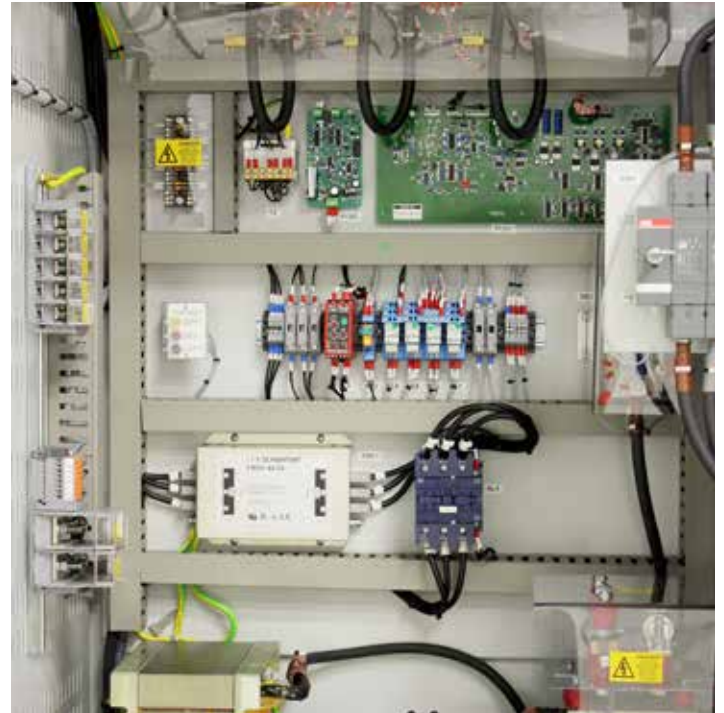
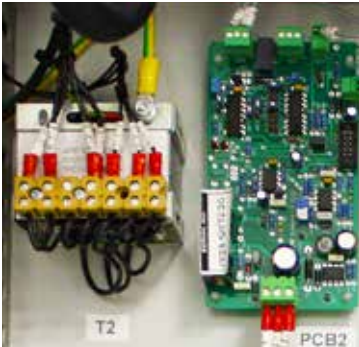
High Volts Shut-down (with manual reset)

Earth Fault

Fuse Fail

High Impedance

Battery Open Circuit



pe-systems.co.uk
+44 (0)1942 260330
sales@pe-systems.co.uk



SPECIFICATIONS ARE SUBJECT TO CHANGE WITHOUT PRIOR NOTICE.